



LXI Overview

LAN & Web Working Group

February 14-16 2006

Working Group Overview

- Specification sections covered by the working group:
 - LAN Specification (7)
 - LAN Configuration (8)
 - Web Interface (9)
 - LAN Discovery (10)

Goals and Intent: **Plug it in & it Just Works!**

- LAN Specification covers the physical IO connection:
 - IEEE 802.3 for wired interfaces (10baseT, 100baseT and 1000baseT)
 - MAC Address label or display.
Be a good citizen!
- LAN Configuration enables the '**Just Works**' connectivity.
 - TCP, UDP, ICMP, etc., protocols
 - IP Configuration (DHCP, Dynamic Link Local Address, Static Address, Duplicate address detection)
 - Recovery (LAN Configuration Initialize)
 - LAN Status Indicator
- LAN Discovery for identifying and retrieving the IP address of LXI Devices.
- Web Interface provides configuration capability and connectivity information—**easy system integration**

Guiding Principles

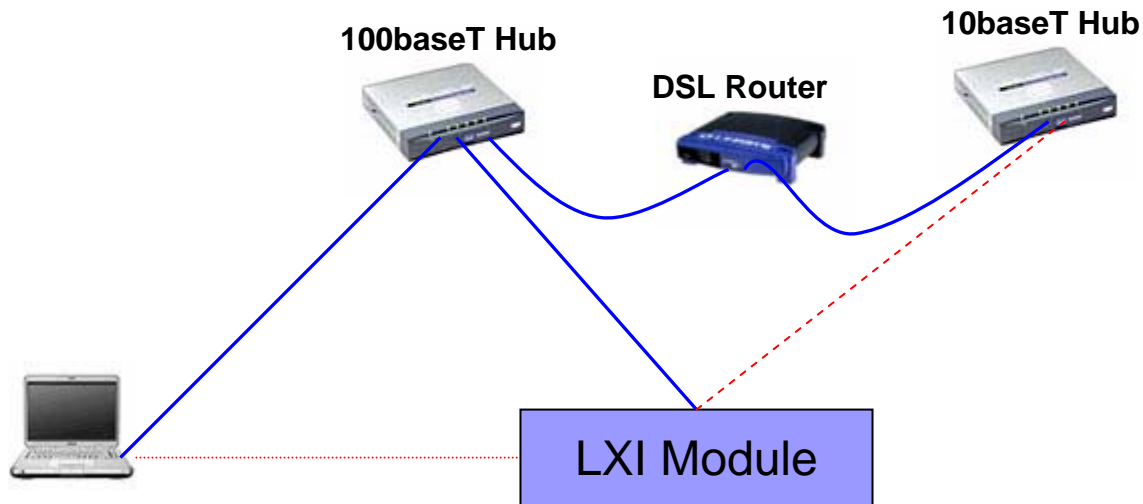
- ‘Standard’ is better than better. If an existing standard meets our need, just use it.
- KISS (keep it simple ...)
- There is immense investment in computer standard IO—we need to take advantage of this in Test & Measurement.

Testing the Spec & Using the Spec

- Plug fest testing has been very thorough—there are methods for each rule and recommendation.
- Four LAN clarifications have been issued—these will be worked into the next release of the Spec.

How We Test

- Test setup/process
 - Tests performed – Rules and Regulations
 - Diagram:



Things to Watch Out For

- DHCP renewal failures
- IP Address configuration
- duplicate address detection
- valid host name reporting
- LAN Status indicator
- LCI function
- Labeling

What's Ahead: Roadmap to rev 2.0

- New Discovery Mechanism
 - Bon Jour (used by many LAN devices today)
 - UPnP (Universal Plug and Play)
- Potential for Resource Locking